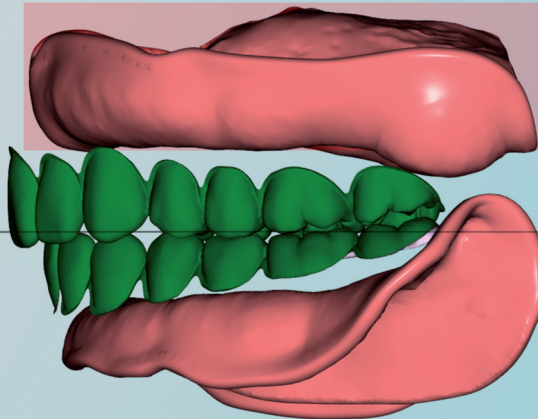


Distributed by:



DIGITAL
SOLUTIONS



CREATE YOUR STYLE



www.sterngold.com

BDCreator[®] PLUS

The process-integrated CAD-Software

On the basis of the information determined by the dentist, a patient-individual digital full denture is created in several working steps using the **BDCreator[®]PLUS**. The handling of the **BDCreator[®]PLUS** is easy to learn due to the logical and clear user interface. Since the software works with the standard .stl file format, it is easy to integrate into the existing dental laboratory workflow.

The selection and automatic alignment of the row of teeth is based on the information of the position of the occlusal plane and the center of the face obtained on the patient.

Free trial **BDCreator[®]PLUS**: www.baltic-denture-system.de



Your *PLUS*:

- Import data of models, impressions, bite registrations, **BDKEY[®] Set** or relined full dentures as well as the registration of matching data
- Software-based model analysis helps in the selection of the appropriate size and tooth arch width
- With virtual articulator and undercut control
- Visualization of the layers supports checking the computerised design for statics, position and number of posteriors
- Wiki-feature directly linked to the respective description of the work step
- Reline impression as an alternative to the **BDKEY[®] Set**

Distributed by:



**DIGITAL
SOLUTIONS**



23 Frank Mossberg Drive
Attleboro, MA 02703
Tel: 1-800-243-9942
Fax: 1-508-226-5473
www.sterngold.com